

The PNW International CONNECTOR

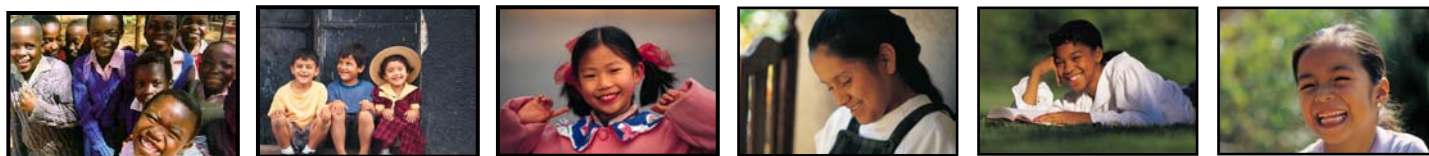
Kiwanis is a global organization of volunteers dedicated to changing the world one child

one community at a time



Newsletter Produced by: **Wendy Falkowski**, Lt. Gov. Division 7
 PNW District Program Chair of International Understanding
 Ph: (250) 470-2592 email: wendyf@telus.net
 PNW Website: <http://www.pnwkiwanis.org/PNWKIResources/intlunderstanding.html>

OCTOBER / NOVEMBER 2007



message from the editor...

HIGHLIGHTS

GOVERNOR'S PROJECT Governor Rich Jensen



KIWANIS FOUNDATIONS

- *KI Foundation*
- *PNW Foundation*
- *Canadian Foundation*

Contents

Message from the Editor 1

Governor's Project 2

Kiwanis International Foundation 3

Kiwanis Foundation of Canada 4

Kiwanis Pacific Northwest Foundation 5

KeyLeader 6

Greetings Fellow Kiwanians:

I hope you all had a great summer. The 2006/7 Kiwanis year saw a lot of changes, good projects and fun times thanks to **Governor Lori**. Even though Governor Lori's title has changed to "Past Governor" that doesn't mean she has retired.

Congratulations are in order as Lori has moved on to the position of Trustee for the KI Foundation.

A round of applause to **Denis and his crew** for a great Tacoma Convention. The facilities were terrific and I have to say I really enjoyed those desserts.

The 2008 Convention will be held August 14-17 at the new Three Rivers Convention Center in Kennewick Washington, near the shores of the mighty Columbia River. For more details go to: <http://www.kennewickkiwanis.org/convention08.htm>

The new Kiwanis year is on its way with **Governor Rich** at the helm. The Governor has lots of great things planned for us. I have included some information in this newsletter.

Our very own **KI Trustee Sylvester Neal**, will be seeking the office of Kiwanis International (KI) Vice President at the KI Convention to be held in Orlando, Florida (June 26-28, 2008). Sylvester is "One" who can "Make a Difference" and will bring change to the face of Kiwanis. Sylvester will open the door to a greater Kiwanis.

This is our opportunity to show our trust in Sylvester as a leader and to showcase the PNW. Please refer to the letter from Past Governor Bobbe Godwin and George Cadman at the following site:

<http://www.pnwkiwanis.org/BobbeGodwinLetter.pdf>

In closing, I want to thank all of you who supported me for the position of Governor-Elect

I am excited to be working with Governor Rich and Past Governor Lori to make this a great 2007/8 year for the Pacific Northwest and look forward to working with all of you in 2008/9.



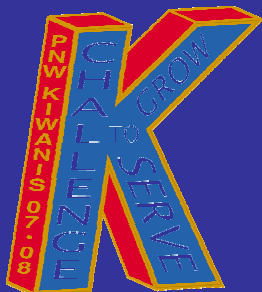
W. Falkowski

We CAN Change The World!



GOVERNOR, Pacific
Northwest District
Rich Jensen

2007 - 2008



Challenge to Grow - Challenge to Serve

Governor's Project

PROJECT STATEMENT: Improve the status of our Service Leadership Programs (SLP's) District Wide.

BACKGROUND: During the Kiwanis International training session for Service Leadership administrators in January 2007 at the American Airlines training facility in Dallas, Texas, the PNW District administrators collectively rated our district programs at that time as mediocre to good. It was decided then and there by all of us in attendance that we must raise the status of our programs from good to GREAT and do it fast.

GOVERNOR'S PROJECT GOAL:

- Increase the number of Service Leadership Programs in the District.
- Increase the number of members in our Service Leadership Programs.
- Increase the Service hours and Projects accomplished by our Service Leadership Programs.
- Increase the Kiwanis Club support to these programs both financially and physically.

CRITERIA FOR GOVERNOR'S AWARD:

To qualify a Kiwanis club must:

- a) Establish a **Terrific Kids** Program or the **BUG** Program in two or more Elementary Schools **OR**
- b) Establish a new **K-Kids** Program in an Elementary School, **OR**
- c) Establish a new **Builders** program in a Middle school, **OR**
- d) Establish a new **KEY Club** in a High School, **OR**
- e) Establish a new **CKI Club** in a University or Jr College. **OR**
- f) Establish or assist in establishing a new **AKTION** club, **OR**
- g) Sponsor 5 or more students to any one **KEY LEADER** Session.

A. Elementary level. For a District our size we have relatively few **Terrific Kids** Programs and **BUG** programs. These are the easiest programs to establish, the cost is minimal, the Kiwanis support is minimal and the schools love these programs. They are great service projects. Either or both of these programs are great lead in's to get a K-KIDS program started. All we have to do is ASK.

B. Middle School Level. Again for a District our size we have relatively few **BUILDERS** Clubs in our Middle Schools. The set up cost is not expensive and during the school year does require some dedicated support from a Kiwanis Club. Probably One Hour per week for one person during the school year. A dedicated school sponsor is a must for this program to really succeed. Nora Zollweck the District Builders club chair is putting together a model for her area of all of the Middle Schools in that area, all of the Elementary schools that feed into each Middle school and what High schools each Middle school feeds into. This will give us model that each Division or Zone can use to do the same thing. This will give us a basis for getting new programs established and to begin a tracking system of students as they progress through various programs

C. High School Level. We are doing well with our **KEY Club** program but we must move this program from good to GREAT. There still exist to many schools without a KEY Club Program. We have programs with poor school support or poor Kiwanis support, these areas must be identified and corrected. These programs take time, commitment and money and we must insure that all are provided. These programs are our future.

D. University Level. As a District we really shine in some areas of this program and are remiss in others. Specifically some institutions do not have a **CKI** program and hopefully this can be changed. Our existing programs are outstanding, the students coming from these programs reflect that status. Where we are remiss is that we are not keeping these outstanding young people in the Kiwanis family. This must be changed, and soon. As every graduate comes out of school they are going to ask us as a Kiwanis club—why should I join your club? What can you offer me as a new club member? We must be able to answer these questions to their satisfaction or Rotary will probably gain a new member.

E. Key Leader Program. An outstanding program which will flourish in proportion to our Kiwanis support to provide leadership training to our youth.

F. AKTION Club. This program is self explanatory. As a District we have very few and we should have MANY of these clubs. They are work and commitment intensive, require some funding and unlimited amounts of love and understanding. The rewards are unlimited. We must do more with this program.

KIWANIS INTERNATIONAL FOUNDATION

The following information was taken from the KIWANIS INTERNATIONAL FOUNDATION website <http://kif.kiwanis.org/>. Please take the time to click on the site and read more...



SHOW YOUR SUPPORT...

Children are our first concern, and to date your Kiwanis International Foundation has raised more than US\$74 million to directly help children lead healthy, happy, and productive lives.

As you may know, the Kiwanis International Foundation is the driving force that raises funds to advance programs developed by Kiwanis International. Contrary to popular belief, Kiwanis International Foundation does not receive any portion of the monetary support provided to Kiwanis International in the form of dues, magazine subscriptions, or material purchases. In fact, your kind-hearted giving is the Foundation's only means to perpetually serve children worldwide. Your help, therefore, is crucial to ensuring the needs of children are continually met.

Primarily, there are two ways to show your support—through [individual giving](#) and [club giving](#).

SCHOLARSHIPS BOLSTER KIWANIS-FAMILY YOUTH

The Kiwanis International Foundation, in partnership with district foundations, has granted US\$185,000 in individual and district-matching scholarships to outstanding members of Circle K and Key Club. The breakdown:

Circle K: seven individual and 72 matching scholarships totaling \$77,000.

Key Club: 20 individual and 88 matching scholarships totaling \$108,000.

The Kiwanis International Foundation and district foundations fund matching scholarships equally. These scholarships, almost all for \$1,000, recognize Circle K and Key Club members who have excelled in leadership and service. Financial need is not a factor.

Each district is eligible for up to five matching scholarships for each youth group based on the percentage of Kiwanis clubs participating in the International Foundation's [Annual Club Gift Campaign](#).

Information about applying for individual scholarships is posted on the [Circle K](#) and [Key Club](#) Web sites each year around November 1. District foundations or special scholarship committees administer district-matching scholarships. See the [district Web site](#) or contact the district office for information

Grants Benefit Children From Head To Toe

At its first meeting of the 2007-08 year, the [Kiwanis International Foundation](#) Board of Trustees awarded nearly \$125,000 in grants to Kiwanis projects in local communities. As in previous grants, funds were awarded to a variety of projects and programs that are Kiwanis-family related, serve young children, and are national or international in scope.

Funding for these grants comes from a myriad of [giving options](#), including the Foundation's Annual Club Gift Campaign, the Kiwanis Children's Fund, and other programs. Among those awarded grants during the recent October meeting:

The [Golden K, Aurora, Illinois, Kiwanis club](#). Funds earmarked for [Hope in Motion](#), a project of the Hope Wall School, which serves more than 300 children with special needs ranging from mild to severe and profound. Hope in Motion project will provide these children a safe playground area that accommodates their physical needs and is accessible to their equipment. The accessible playscape can potentially solve many individual developmental needs and help students attain their Individual Education Plan (IEP) goals at the [Hope Wall School](#) by improving social and emotional interaction, meeting fine and gross motor therapy goals, and developing communication through play-based therapy.

The [Kiwanis Club of Des Plaines, Illinois](#). Grant will be used to continue the club's shoe/boot project. For the past six years, the Des Plaines club has provided shoes or boots to local elementary school children, at no cost to their families. The club has provided shoes or boots to more than 600 children.

The [Kiwanis Club of Jeremie, Haiti](#). The Jeremie club sought funds to send 100 children to elementary school. This grant will help by providing teachers, a daily meal, and school uniforms.

The [Kiwanis Club of Waynesboro, Virginia](#). The Kiwanis Club of Waynesboro and the Capital District Foundation support the [Augusta Regional Dental Clinic](#) in providing preventative, restorative, extractive oral health care and educational services. This grant will make it possible to provide dental services to an additional 2,000 children annually.



KIWANIS FOUNDATION OF CANADA

Committed To Extending A Helping Hand...

... to our youth ... to the disabled ... to disaster situations

The following information was taken from the KIWANIS FOUNDATION OF CANADA website <http://kiwanisfoundationcanada.org> Please take the time to click on the site and read more...

Matching Scholarship Programs

Information Brochure (PDF)
Click to Read - Right Click to
Save Locally
[matching_scholarship_programs_0406.pdf](#)

The Purpose of the Scholarship

Kiwanis encourages deserving students in the pursuit of education, high personal goals and community responsibility.

CLUB ELIGIBILITY:

See new Eligibility Rules (*see website*)

Any Kiwanis Club in Canada, **making the annual contribution to the Kiwanis Foundation of Canada of \$15.00 per Member in 2007-08, shall be eligible and be considered for a Matching Scholarship up to a maximum amount of \$500.** The final decision as to club eligibility shall be that of the Scholarship Committee comprised of Members of the Foundation Board of Directors.

CLUB SELECTION PROCESS:

Clubs will be selected from those applying on a District, geographic and rotational basis. Selection will depend, in part, on current Foundation Scholarship resources and previous Scholarship distribution. The aim of the Foundation is to encourage all Kiwanis Clubs to promote a Youth Scholarship Program in their communities.

STUDENT ELIGIBILITY

The criteria for Student eligibility shall be acceptable grades, good character, financial need, participation in student activities and community service involvement. It is the responsibility of the Sponsoring Kiwanis Club to assess the eligibility of the Student. Students who are considered eligible shall be:

- Pursuing post-high school studies at a recognized institution **OR**
- Pursuing graduate studies at a recognized institution **OR**
- Competing for achievement awards in many recognized competitions such as music, graphic art competitions and science fairs

APPLICATION PROCEDURE

- a) An eligible Kiwanis Club shall apply, in writing, to the office of the Kiwanis Foundation of Canada for inclusion in the current year Scholarship Program **before March 31st of each year.** Selected clubs will be notified of their inclusion in the program by the foundation not later than May 15th of the same year.
- b) Selected Clubs will provide **ALL** of the following to the Foundation **at least two weeks prior to the presentation date:** application including name, address and SIN number of recipient description of the student's accomplishments, a statement regarding the amount of the scholarship request, together with a cheque for the club's share of the matching scholarship
- c) The approved Kiwanis Clubs will receive a scholarship cheque along with a Foundation Presentation folder. The total amount of the scholarship cheque will be equal to the amount received by the Foundation plus the matching grant. The matching grant shall not exceed \$500. All cheques are payable to the individual, organization or institution named in the scholarship and are refundable to the Foundation if not used.

K - Family New Club Building

- The Kiwanis Foundation of Canada supports the ongoing work of Kiwanis Clubs in Canada to build and promote Circle K, Key Club, Builders Club, K Kids, and AKtion Clubs.
- The Foundation has established a fund to provide grants of up to \$500.00 to Kiwanis Clubs in Canada to assist in building new Kiwanis Sponsored Youth and AKtion Clubs.
- If your Club is interested in participating in the Sponsored Youth Grant program, the process is easy.
- The purpose of the fund is to build new Kiwanis Sponsored Youth and AKtion Clubs in Canada. Any Kiwanis Clubs in Canada may apply to the Foundation for a one-time grant of up to \$500.00. The request is to be supported by a budget and a stated purpose of building a Kiwanis Sponsored Youth or AKtion Club.
- The budget may include direct costs (banner, bell, gavel, pins), travel costs, registration fees etc, providing the expense is justified to build a new Club.
- Kiwanis Clubs will be selected from those applying on a District, geographic, and rotational basis. Selection will depend, in part, on current Foundation Sponsored Youth Grant resources, and previous grant distributions.
- Kiwanis Clubs receiving the grant will be requested to provide a copy of the Kiwanis Club International Registration Certificate, photographs and a write up for the purpose of including it in the 'Foundation News', which is distributed to all Kiwanis Clubs in Canada.
- If you are interested in applying for a Sponsored Youth Grant, an Application form can be found on our Website, or contact the Foundation Ambassador for your Division.



PACIFIC NORTHWEST KIWANIS FOUNDATION

The following information was taken from the PACIFIC NORTHWEST KIWANIS FOUNDATION website <http://www.geocities.com/pnwkiwanisfoundation/> Please click on the following for more...



The Pacific Northwest Kiwanis Foundation:

Building a Lasting Legacy for the Children and Youth of the Pacific Northwest

Recognized by the U.S. Bureau of Internal Revenue as a 501(c)(3) Charity

Mailing Address: P.O. Box 747, Beaverton, Oregon 97075 USA

If you are a member of a Kiwanis Club of the Pacific Northwest District, then you are a member of the Pacific Northwest Kiwanis Foundation.

Through Helping Hands Fellowships, Memorial and Remembrance Gifts, and Planned Giving programs, the Foundation provides you with a variety of ways to leave a lasting legacy for the children and youth of the Pacific Northwest.

SCHOLARSHIP APPLICATIONS

The Pacific Northwest Kiwanis Foundation provides almost **\$20,000 US** each year to support sponsored youth through district-wide scholarships and grants for leadership activities:

ELEMENTARY SCHOOL (K-KIDS) SCHOLARSHIPS (DESCRIPTION)

- Annual Foundation Support up to \$750 US
- Plaques and modest scholarships available.

Deadline: Must be received by **April 1st**
Link to Contest Theme and Booklet: [CLICK HERE](#)

Address to Send Applications:
PNW K-Kids Administrators (Contest Entry)
25503 S Dague Rd, Kennewick, WA 99337

MIDDLE SCHOOL OR JUNIOR HIGH (BUILDERS CLUB) SCHOLARSHIPS (DESCRIPTION)

- Total Annual Foundation Support: up to \$750 US.
- Plaques and modest scholarships available.

Deadline: Must be received by **April 1st**
Link to Contest Theme and Booklet: [CLICK HERE](#)

Address to Send Applications:
PNW Builders Club Administrator (Contest Entry)
131 Old Twisp Hwy, Twisp, WA 98856-9773

HIGH SCHOOL OR SENIOR HIGH (KEY CLUB) SCHOLARSHIPS (DESCRIPTION)

- Six \$1,000 scholarships available to Key Club students accepted into college or university.
- One \$1,000 matching scholarship co-funded with the Kiwanis International Foundation.

Total Annual Foundation Support: \$6,500 US.

Deadline: Must be received by February 1st
Link to Scholarship Application: [CLICK HERE](#) (PDF format)
PNW Key Club Administrator (Contest Entry)
2407 126th Ave. Court East, Edgewood, WA 98372

COLLEGE OR UNIVERSITY (CIRCLE K) SCHOLARSHIPS (DESCRIPTION)

- Four \$1,500 scholarships available for Circle K students enrolled in college or university.
- One \$1,000 matching scholarship co-funded with the Kiwanis International Foundation.

Total Annual Foundation Support: \$6,500 US.

Deadline:
Must be postmarked no later than **January 26th**
Link to Scholarship Application: [CLICK HERE](#) (PDF format)

Address to Send Applications:
PNW Circle K Administrator (Contest Entry)
4707 Black Lake-Belmore Rd., SW., #20, Olympia, WA 98512

SPONSORED YOUTH GRANTS

In addition to these scholarships, the Foundation typically provides grants for youth leadership activities of Pacific Northwest Key Club and Circle K.

Total Annual Foundation Support: \$5,000 US.

Key Leader: Unlocking the Future for Youth Leaders

This article taken from the following website. <http://www.key-leader.org/about/>



Since 1925, Kiwanis International has positively impacted the lives of young leaders through its youth leadership organizations: Key Club and Circle K. Many credit these programs for their **first taste of leadership**, including senators, governors, university presidents, corporate executives, and a United States president.

Kiwanis International announces Key Leader—a new leadership experience for today's youth leaders. It will focus on service leadership as the first, most meaningful leadership development experience. A Key Leader will learn the most important lesson of leadership—**leadership comes from helping others succeed**.

Recently, a task force of professionals with more than 175 years of experience in teaching, coaching, developing, and encouraging young leaders was asked to **invent something extraordinary**. The result is an exciting program designed to move beyond where most other youth leadership programs stopped. The result is Key Leader.



- Key Leader is designed to reach students in the **middle of the pack** as opposed to those at the top of the academic pyramid.
- Key Leader is designed to begin a process of personal leadership growth and development as opposed to being a weekend event that is forgotten weeks or months later. It will be a **life-changing experience**.
- Key Leader is designed to **open doors** to leaders as young as recent eighth grade graduates. Leadership development shouldn't wait.
- Key Leader is designed to teach what it means to be a youth leader in **three different communities**: the local community; the state or national community; and the global community.

More information available at: <http://www.key-leader.org/about/>

There are 3 Key Leader events in the Pacific Northwest during the 07-08 calendar year! The first 2 have already taken place but there is a 3rd event in May, 2008. So now is a perfect opportunity to seek out those potential young leaders in your community and send them to camp. Contacts below. **Sylvia Maly, is the PNW Key Leader Administrator and you may reach her at: ltgkiwa@yahoo.com**

October 5-7, 2007
Camp Chewelah, Washington
Site Coordinator: Daniel Verheul
Daniel.verheul@sci-us.com
509-981-8298 (cell)

October 12-14, 2007
Mt. Hood Camp, Oregon
Site Coordinator: Rick Hicks
rickhicksonline@gmail.com
503-572-0448 (cell)

May 2-4, 2008
Camp Brotherhood, Mt. Vernon, WA
Site Coordinator: Ken Bell
Kmbell2@verizon.net
360-436-9818

Check Out the New **KI** and **Kiwanis One** websites.
www.kiwanis.org & www.kiwanisone.org